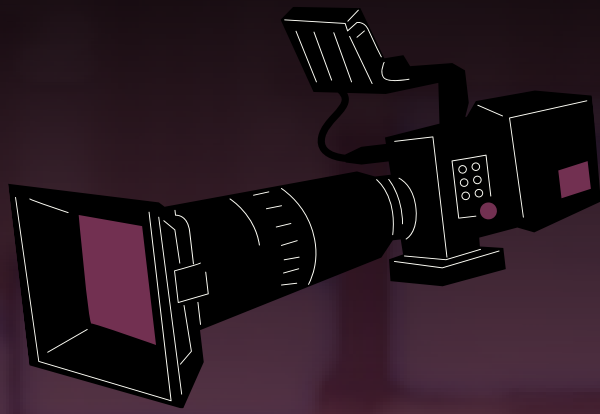




University of  
Reading



Venue  
Reading

HOSPITALITY

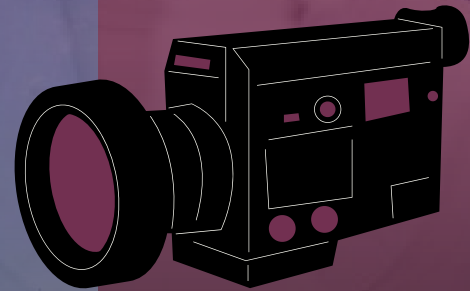
at



Setting the scene for your next  
award winning production!



● REC



V E N U E  
R E A D I N G

FILMING AT THE  
UNIVERSITY OF READING

# Your next filming location all on one University Campus.

Welcome to the University of Reading. Once you have visited our campus you will realise just how many different buildings of interest there are on the University campuses for filming. The University of Reading campuses are really well located, providing a great opportunity for filming and we're just up the road from the newly built Shinfield Studios. We can provide you with anything from a beautiful Concert Hall to a changing room or toilet, corridor or office.

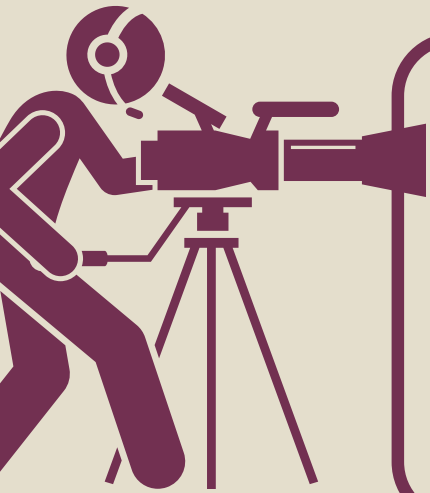
## Our Experience.

The Venue Reading team have hosted a number of film production companies on our campuses - whether it be for a film or commercial, we have access to a wide selection of internal and external settings for commercial and non-commercial filming.

Our impressive Whiteknights, London Road and Greenlands Estates boast a variety of building styles, ranging from traditional buildings designed in the early 20th Century, to modern buildings featuring modern scientific settings.



# Reviews



The Venue Reading team were a delight to work with, incredibly helpful and booking was very straightforward.

The simulation ward was the perfect location for our drama reconstruction and the expert help from Mike, the technician was the cherry on the cake!

Liz Duncan  
Production Manager at Woodcut Media



[imdb.com/search/title/?companies=coo494468](https://www.imdb.com/search/title/?companies=coo494468)



As a location manager, filming at The University of Reading was a seamless process. The location itself easily lends itself to filming in terms of space and logistics. We made use of Foxhill House to double as a WW2 set for an independent feature film. The Venues team at the University made the entire process easy from start to finish and I would completely recommend the space as a location.

Rich Taylor, Location Coordinator, August Street Films Ltd



[imdb.com/title/tt29634629](https://www.imdb.com/title/tt29634629)



Thanks so much, the outside of Foxhill House worked so well for us as a location.

Rob Gooding, Assistant Location Manager  
Cleaner Movie Limited



[imdb.com/title/tt27812086](https://www.imdb.com/title/tt27812086)





# Live Productions



As well as providing locations for filming for editing later, we have venues where you can set up a live production whether that be for Radio or Television.





# Availability, Pricing & Terms

As a living campus community, we do have some limitations, but are always up for working with you to find a solution to your filming requirements and we understand the need for timely responses when you are looking for your next shoot location.

Depending on the location you are looking to use we are able to accommodate bookings throughout the year, but during the Universities Easter and Summer vacation, the campus is much more quiet as the majority of students head home for the breaks so there are lots more opportunities for longer periods of hire and these times open up additional locations.

Film hire costs vary depending on size and type of production and due to the unique and vast amount of spaces, we offer a bespoke price for the location with additional fixed fees. When enquiring it is helpful to understand what budget you have for the project too.

We also have a University wide filming agreement which you would need to use rather than our team signing your agreement. The agreement can be downloaded below.

[DOWNLOAD UNIVERSITY FILMING AGREEMENT](#)

## Fees (Depending on location)

<b>Hire Management Fee</b>	£750 (+ VAT) one off cost (less than 3 days)
<b>Location Hire*</b>	Department Specific Cost: Minimum of £550 (+ VAT)
<b>Porters Charges**</b>	From £24 per hour (+ VAT)
<b>Technical Services (labs)**</b>	£33 per hour (+ VAT)
<b>Specialist Cleaning (labs)</b>	Quote on request
<b>Parking for 20+ vehicles*</b>	Free for less than 20 cars or £200 (+ VAT) for 20+
<b>Green Room***</b>	£110 (+ VAT) per session

\* charged daily (A day is 8am to 6pm)

\*\* charged hourly

\*\*\* charged by session (8am to 1pm, 1pm to 6pm, 6pm to 10pm)



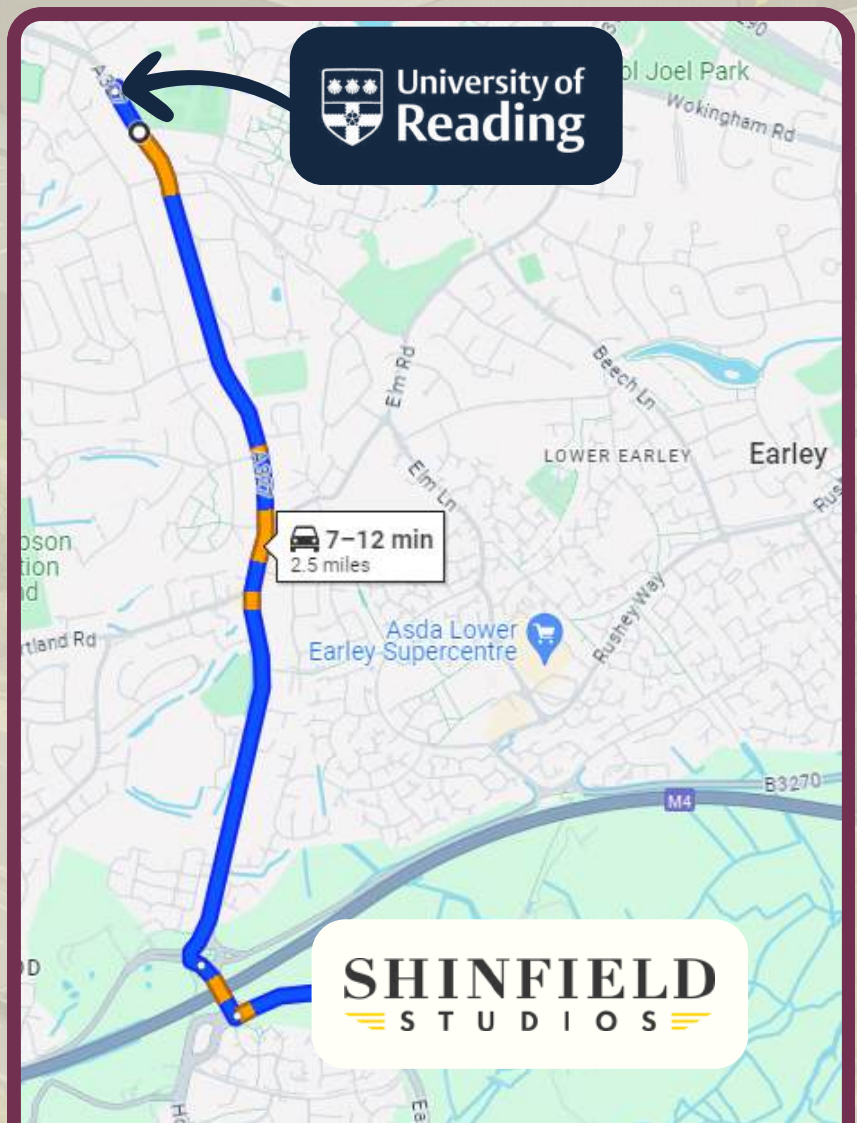
# Your offsite film location just 2.5 miles from Shinfield Studios.

**Shinfield Studios has put Reading, Berkshire on the map as a filming destination and we're only 2.5 miles away from the new studios.**

Shinfield Studios is a new powerhouse of British film, tv production & innovation with eighteen fully soundproofed, air conditioned stages open now.

Building on the UK's global reputation for producing world class content, Shinfield Studios will offer film and television producers nearly 1 million sq ft of studio space, comprised of 18 new purpose-built sound stages, workshop and mill space plus a contemporary office environment and post production facility.

The film and TV studios will create a substantial and diverse range of employment opportunities and will enhance the innovation-led strategy at the Thames Valley Science Park established by our University of Reading, in conjunction with Wokingham Council.

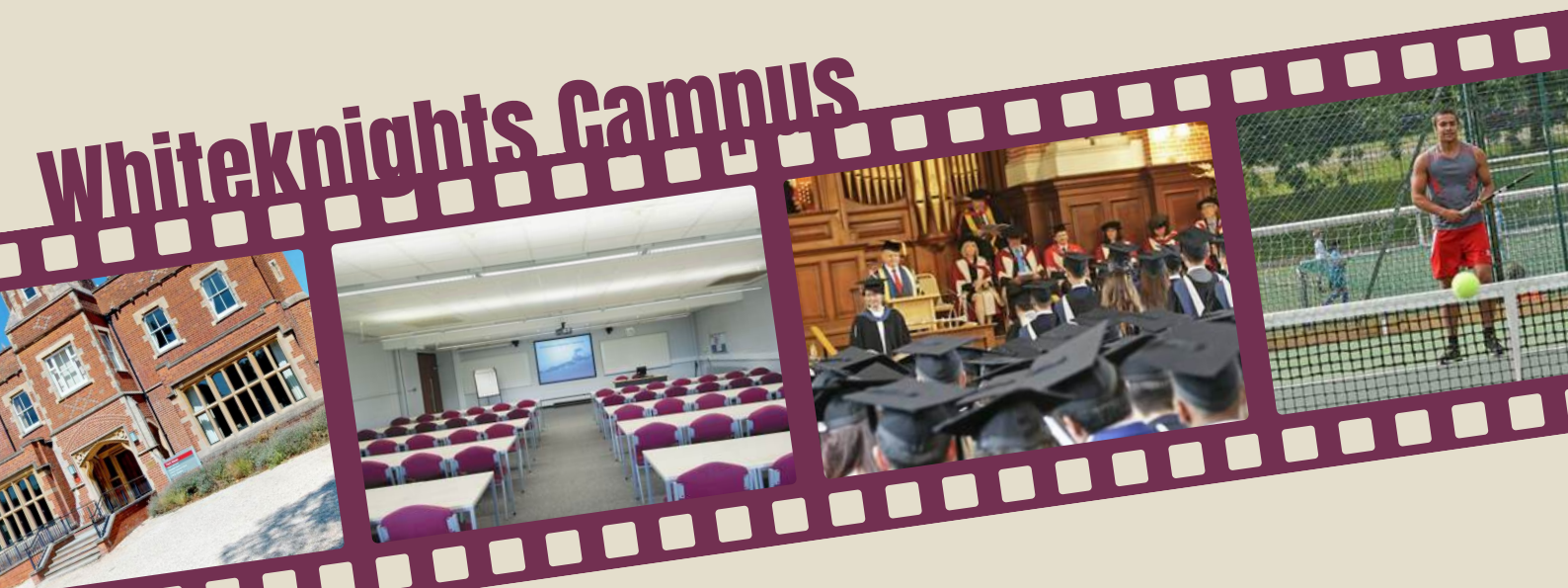




# Our three campuses

The University of Reading has various buildings across its three main campuses as well as other off campus buildings such as the farms, Thames Valley Science Park and residential accommodation.

The main campus is the Whiteknights Campus featuring so much choice for a film location and just a few miles up one road to the Shinfield Studios, Thames Valley Science Park campus.







## Clinical Training Suite (Hospital Ward)

The Clinical Simulation Training Suite provides students and NHS staff with vital learning experience in a simulated hospital environment, so could be an ideal location for shooting real-to-life hospital scenes.

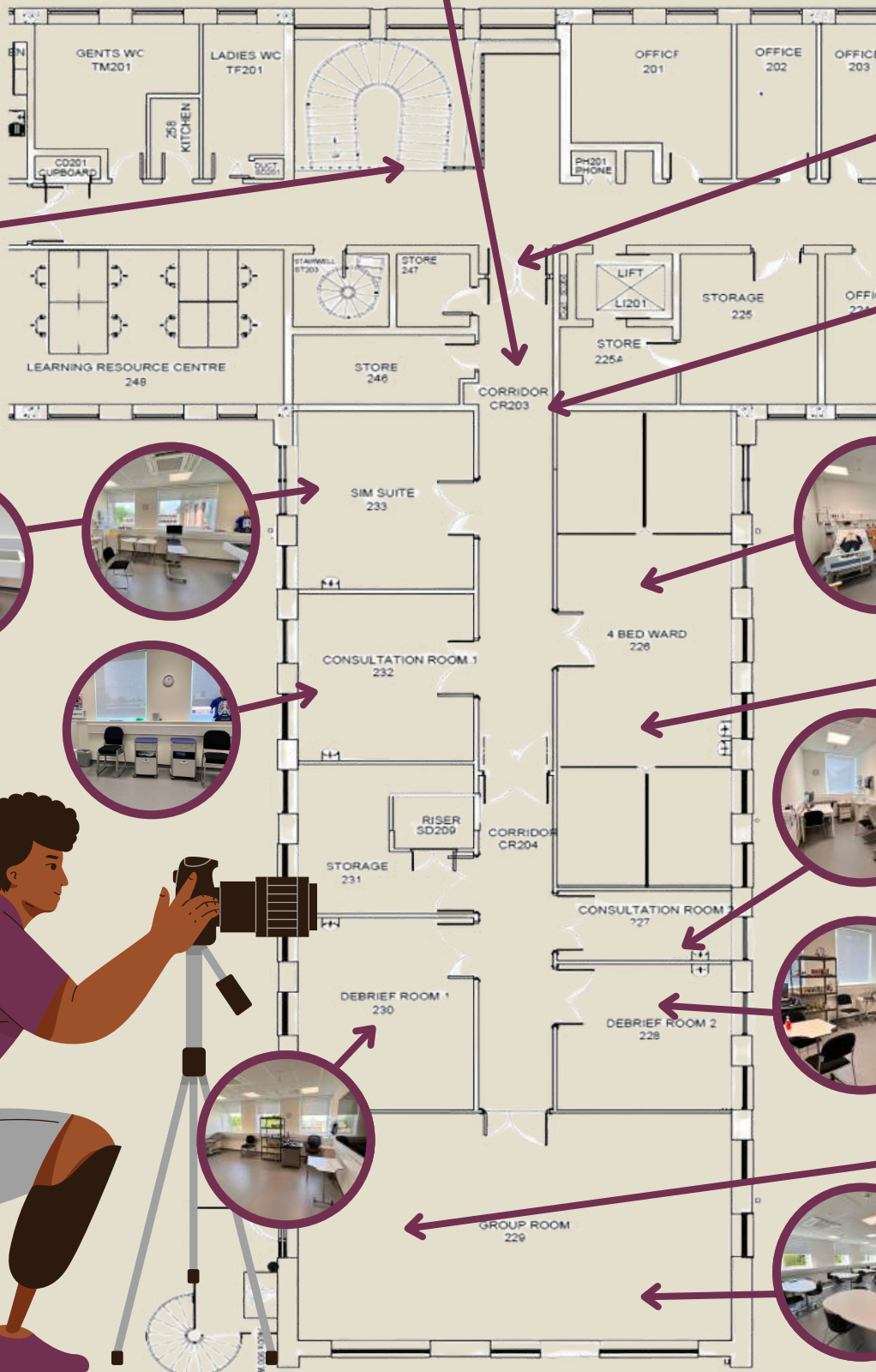
The Training Suite is a recreation of a four-bed hospital ward, including specialist equipment, video link facilities and consultation spaces. You could use the video link to see how the filming is going without disrupting the set. The facility is located on the University's Whiteknights campus and has been designed in partnership with the Royal Berkshire NHS Foundation Trust to emulate a typical ward found at the Royal Berkshire Hospital.

This space is only available at certain times of the year and would need to be requested on an ad-hoc basis as the University and NHS training takes priority in this space.





# Clinical Training Suite (Hospital Ward) Layout







## Laboratory Spaces

At the University we have some of the largest lab spaces in Europe. As the new home of the School of Biological Sciences, our £60m Health and Life Sciences building is purpose-built for teaching and research. The building houses a flexible teaching lab that can be subdivided to create up to four separate spaces.

Some lab spaces will need to be decontaminated before use. This could take up to six hours prior to filming.

We are also able to facilitate the hire of additional laboratory equipment, use of fume cupboards, fridges etc.

There are 9 parking spaces outside in car park 12 and a loading bay close by.

**Hopkins laboratories featured on:**



**LOCATION HQ**

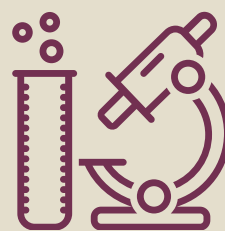






[Virtual Tour link](#)

## Laboratory Spaces



### Health and Life Sciences

This building is the latest to be constructed on our campus providing modern laboratory spaces. On the ground floor there is a Teaching lab which can be split into 4 spaces or 1 large space. It is one of the largest of its kind in Europe.

After the Universities second semester there is generally good availability to hire this space, but over the summer vacation there is plenty more opportunity. Weekends throughout the year can be tricky to book, but it isn't impossible.

On the second floor you will find the Pharmacy labs which are grade 2 category and can look like a research or teaching lab.

The Health and Life Sciences Prep area has an area for putting on your lab coats, walk in fridges etc.

### Harry Nursten - Food

This building is from the 2000's and has central classrooms 2.34 & 2.33 that could be used as green rooms.

Laboratories, 414 & 413 have a viewing glass between the rooms and has a much older feel/style to Health and Life Sciences with lower ceilings and has two fume cupboards in 414.

Compared to HLS Laboratories 411 & 410 are brighter and newer looking also with a glass panel between two rooms and in 410 there are three fume cupboards.

These labs would be good for chemical warfare, microbiology etc.

The Pharmacy Lab is a category 2 Lab, and can look like a research or teaching lab.





## Laboratory Spaces

### Chemistry

The Chemistry building has a 60's vibe to it.

The lab C61 is an open space lab with lots of natural light and there tends to be more availability in this lab.

Labs 144 & 244 have high ceilings and red & grey in colour. The lecture theatres in chemistry are the nearest green rooms spaces.

### Hopkins

The Hopkins building is over three floors providing modern labs and classroom space.

In G05 it has high ceilings and more of a research feel - could be used for Microbiology or research.

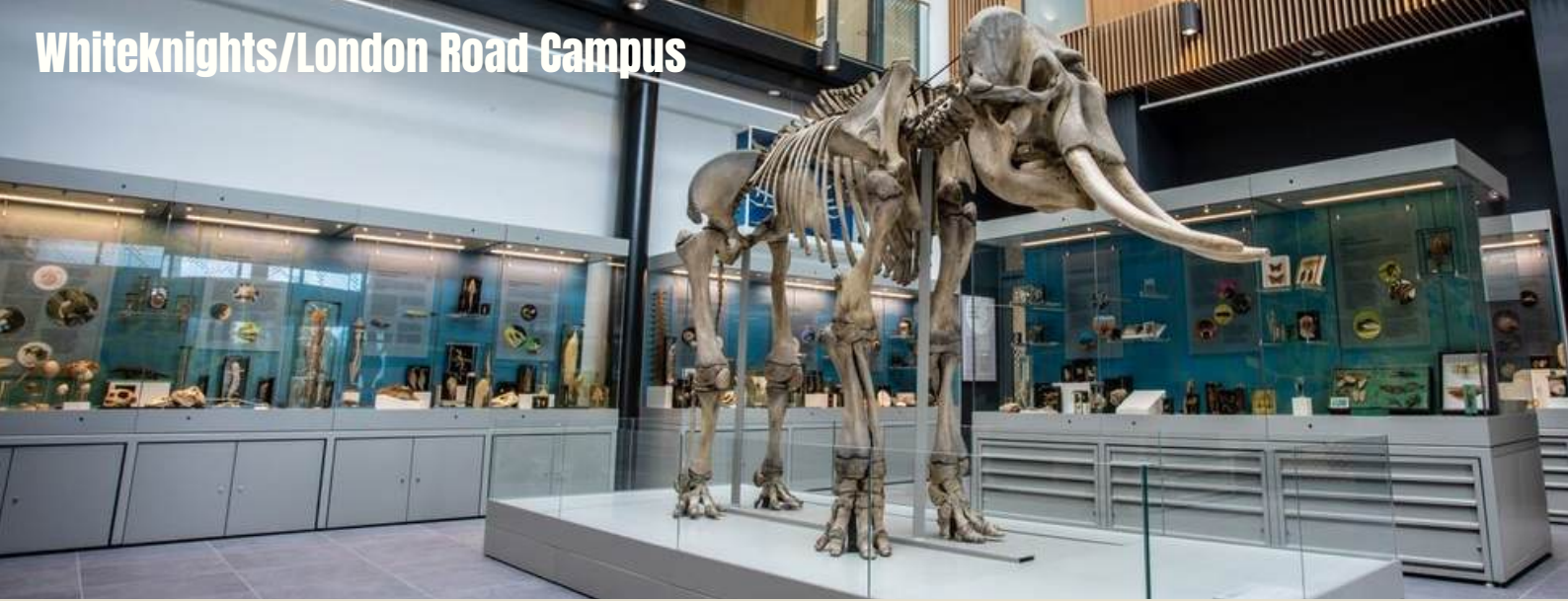
G06 also has high ceilings and the same bench set up, but larger in size and number of stations. It has a large walk way in the middle of two banks of stations.

Hopkins also has a great central room for a green room on the second floor.



[Virtual Tour link](#)





## Museums

Our University of Reading Museums offer exciting hands-on experience with museum objects. Some include interactive, immersive galleries which explore questions of identity, environment, technology, culture and health. The **Ure Museum of Classical Archaeology**, the **Museum of English Rural Life**, and the **Cole Museum of Zoology** are all open to students, staff and the public.

You can take a virtual tour of some of our museums here:

[reading.ac.uk/VirtualTour/museum-of-english-rural-life/](https://reading.ac.uk/VirtualTour/museum-of-english-rural-life/)



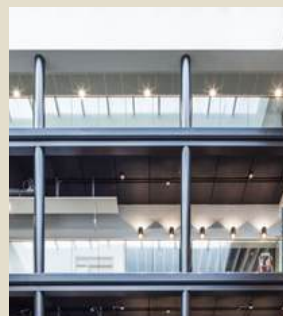
The Cole Museum  
of **Zoology**



THE MUSEUM  
OF ENGLISH  
RURAL LIFE



Ure Museum  
of Greek Archaeology







## SportsPark

The University of Reading offer excellent sports facilities for health and well-being.

On campus you will find courts, pitches and playing fields for a wide range of sports, as well as a fully-equipped sports centre with gym.

Our outstanding sports facilities include: a state-of-the-art fitness studio, specialist exercise studios, squash courts and large multi-purpose sports hall.

A wide range of indoor and outdoor pitches are available for all year use, including purpose-built floodlit pitches, equipped with the latest third-generation surface and a synthetic turf pitch.

The SportsPark is open to the student, staff and local community and so is operational at all times so filming is available on an adhoc basis or out of hours.

Find out more about the SportsPark facilities here:

[sport.reading.ac.uk](http://sport.reading.ac.uk)







# Café, Bars, Dining Outlets & Pub

The University has lots of venue choice when it comes to the dining facilities on campus. There are plenty of bars, a traditional pub, a function bar, two large dining halls, and lots of campus cafés.

Click on the links to find out more about each venue.

- Park House Bar
- The Dairy
- Park Eat & Bar
- St Patrick's Dining Hall
- Wantage Dining
- Meadow Suite Bar
- Café Trilobite
- Café No.1
- Agriculture Café
- Henley Business School Café
- The Library Café
- Enterprise Café
- Dolche Vita Café
- The Breakfast Box Café







## Library and Study Spaces

Built in the 1960's and extended in 1984, the Library at Whiteknights Campus at the University of Reading was, by 2012, in need of upgrading both to keep up with changing study patterns, and to overhaul it's general appearance. The library is now a modern bright space.

Aside from the stacks of books, the library building also has the below spaces:

- Study areas including quiet and silent study areas, group study and discussion rooms.
- Computing facilities including open access PC areas, specialist equipment and a staffed IT Service Desk for all your queries.
- Study Advice for developing skills for effective study.
- Library Café – relax and refuel here.
- Basement book stacks - In the basement, there are tower stacks with books.

**Download Library Floor Plans**







## Conference & Event Spaces

The campuses offer traditional buildings rich in heritage to modern state-of-the-art meeting rooms with all-year round availability.

With a flexible range of capacities and facilities, including conference rooms, lecture theatres, function suites and exhibition spaces.

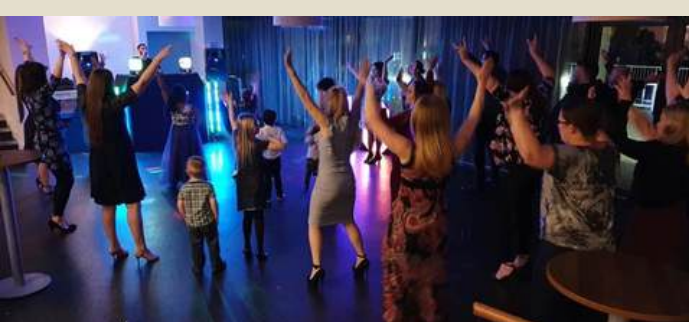
There is a space for almost any kind of conference filming requirement, whether you need a small meeting room for a police interview, or a large space to host a mock conference/tutoring session.

**You can take a virtual tour of some of the conference and event spaces here:**

**[hospitalityuor.co.uk/venue-reading/virtual-tours](https://hospitalityuor.co.uk/venue-reading/virtual-tours)**







## Function Spaces

If you require a party set up, we can offer you our Meadow Suite or Blandford's for filming.

The Meadow Suite provides the perfect ambiance to shoot a scene in a party venue. With its unique versatile room layout the Meadow Suite suite has two levels, the upper level seating 100 guests for dining allowing the lower level to be the perfect stage for evening entertainment or for additional dining. The floor to ceiling doors open onto our exclusive decking area, which overlooks the meadow leading down to the lake. A fully equipped and licensed bar is available within the Meadow Suite.

Blandford's offers a more intimate dining experience for up to 30 seated guests (Actors) in the main dining room. The interlinking Blandfords Ante Room can offer private dining for up to 10 guests (Actors)

Find out more about our function spaces here:

[hospitalityuor.co.uk/venue-reading/virtual-tours](http://hospitalityuor.co.uk/venue-reading/virtual-tours)







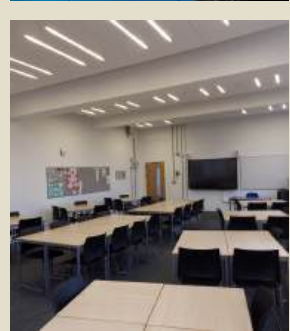
# Teaching/Lecture Locations

As a University campus, there are hundreds of classrooms, lecture theatres and study areas however most of these spaces would only be available over the Easter or Summer Vacation time.

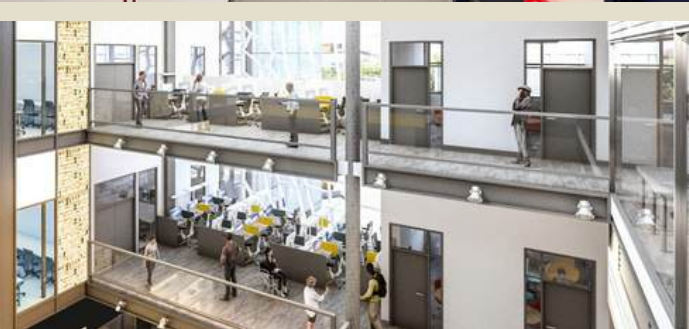
If you are looking for a teaching location outside of these times, please do get in touch as it may be that certain spaces are not in use as Venue Reading are able to book unused spaces during term time.

The University Semester Dates can be found here:

[reading.ac.uk/essentials/the-important-stuff/key-dates](http://reading.ac.uk/essentials/the-important-stuff/key-dates)







## Corridors & Staircases

As well as all the nice spaces on campus, there are plenty of foyers, corridors and staircases to choose from - Too many to show here, so if you are looking for a foyer or a corridor/ staircase, the best way to see the options is to arrange a tour with the Venue Reading team.

Depending on the time of year some of the foyers are more accessible than others.





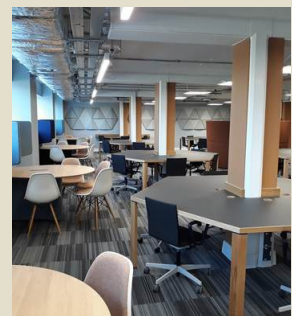


# Offices

**Did you know, the Office by Ricky Gervais was filmed in Reading, Berkshire?**

Offices are available depending on the time of year, day of the week etc.

If you require an office location, please let the Venue Reading team know the kind of office required. Is it a single person office, a large office with computers, a shared workspace, old or new.





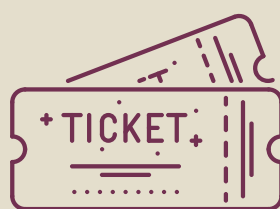


## The Great Hall

The Great Hall is located at our historic London Road campus, the original home of the University in the heart of Reading, a perfect setting to film a concert, graduation ceremony, exams or as a cleared dance venue!

A beautiful Grade 2 listed building which was opened in 1905, the Great Hall has a fixed stage with a magnificent organ and grand piano, ample space for a choir and orchestra, and can seat audiences of 350 to 500. Multiple dressing rooms are available back stage along with toilet facilities for the performers to use during the concert.

It has also been seen on the TV for BBC Question Time and the university's own summer and winter graduations take place in this historic building.





A wide-angle photograph of a large field of purple and blue flowers, likely Alliums, in full bloom. The flowers are densely packed in the foreground and middle ground, with some taller stems reaching up. The background is filled with a dense line of green trees, including a prominent, large, rounded tree in the center. The sky is clear and blue. The overall scene is bright and sunny, suggesting a warm day in a park or garden.



A photograph of a garden path lined with vibrant pink and red flowers, with two people walking in the distance.



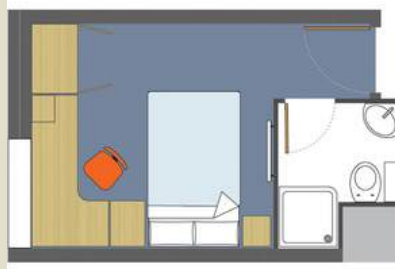


# Whiteknights Campus and Greenlands Campus

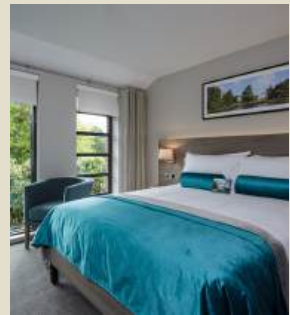


## Halls Accommodation & Hotel

During the summer we have over 2,000 halls rooms. Ideal if you want to shoot a film in a University halls setting. Each flat contains between 8-10 ensuite rooms or shared bathroom facilities.



If accommodation is required for filming during term time, we have our Greenlands Hotel at our Henley campus which has 100 premium bedrooms in Thames Court.







## External shoots across campus

If you are looking for some outside space for a shoot backdrop, our campus is perfect.

A thirteenth Green Flag Award has been given to the University of Reading's Whiteknights campus, recognising it as one of Britain's top green spaces. Each year, the Green Flag Award scheme recognises the UK's best public outdoor spaces, with winners judged on the overall quality of green space and the work that goes into keeping grounds in pristine condition.

Set within 134 hectares, the scenic Whiteknights campus includes a lake, woodlands and the popular Harris Garden - all available for students, staff and the local community to enjoy.







## Commercial and Home Kitchens

If you are looking for a commercial kitchen or home style kitchen for your next shoot, there are many commercial options as well as kitchens in halls, staff offices etc.







## Foxhill House

**Foxhill House is a Gothic revival style building and currently houses the University's School of Law.**

The building is a grade II\* listed building. The former stables and coach house immediately to the north east, which are now physically connected to Foxhill House, and also form part of the School of Law, are separately listed as Grade II.

The house was originally built in 1868 by the architect Alfred Waterhouse as his own residence (he also built the nearby Old Whiteknights House for his father). The House is built of red brick (for which Reading is famous for).

Foxhill house was extended in 2009, in order to make room for more offices for academics and teaching staff.

[Virtual Tour link](#)







## Park House

Whiteknights Estate has a fascinating history that saw it rival Kew at one point with its collections of exotic plants. The original Whiteknights Manor House, stood where Park House is today.

The building we know as Park House was built and known as Whiteknights Park for much of its life, with Park House being another buildings, roughly where MacKinder Hall is today.



[Virtual Tour link](#)







## Palmer

The Palmer building is at the heart of the Whiteknights Campus.

The G10 lecture theatre is the largest theatre on campus and provides an impressive backdrop for a conference. It holds up to 390 people and includes 3 projectors and screen, a tech table including mics, built in speakers and cameras for streaming.

The Palmer 109 Lecture theatre seats up to 166 people and includes a projector, 1 large central screen, a tech table with mics and built in speakers.

Palmer also has a variety of classrooms available in the building ranging in capacities of between 27 and 91 people. We have 5 interconnecting ground floor classrooms which can be adapted to your needs. All classrooms are fully equipped with digital screens and a tech table.

[Virtual Tour link](#)







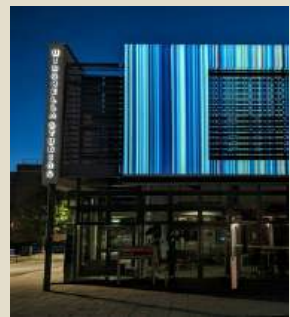
## Minghella

Minghella Studios are a vibrant, inclusive place for teaching, learning and creating. Our environment is where critical thinking and creative development work together in theatre spaces, cinema auditorium, TV studio and post-production suites.

We regularly host conferences and symposia, visiting theatre companies, practical workshops led by industry professionals, student-led festivals, screenings, 'film analysis club' and visiting lectures by prestigious theatre and film makers, actors, philosophers and critics. The Beckett Research Centre and the Centre for Film Aesthetics and Cultures use the Studios.



[Virtual Tour link](#)







## Wantage

Wantage Hall, built 1908, is the oldest hall of residence at the University of Reading. The hall is one of 13 belonging to the University and is close to Whiteknights Campus. It is designated a grade II listed building, a status given for its special architectural or historic interest.

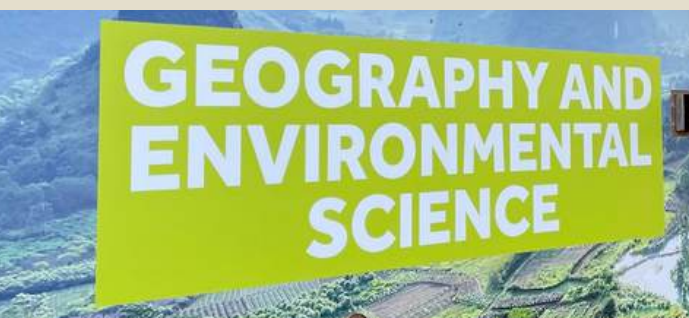
Wantage Hall was built in 1906–1908 by Harriet, Lady Wantage in memory of her husband Robert Loyd-Lindsay, 1st Baron Wantage. The architect was Charles Steward Smith, and the hall was laid out as a quadrangle and built in Neo-Tudor style in red brick with stone details.

Wantage Hall was used by the No 1 School of Military Aeronautics during the First World War for training flight instructors, cadet pilots and observers. During World War II, it was the headquarters of RAF Reserve Command.

In 1970 an extension of little architectural interest was built to the north, also in red brick. This was called "New Court", and the original structure became "Old Court".







## Russell Building

The Russell Building is home to the Department of Geography and Environmental Science at the University of Reading where you would find, research labs, and the Plant Room on the top floor.

This is where some of our researchers work to tackle the most urgent global issues and combat challenges such as climate change, natural disasters, social inequalities, and poverty.







## AMS Tower

Located on the Whiteknights campus is the AMS Tower. The building is not in use at the moment and could be an ideal location for filming.

The ground floor has a large foyer area with a ticket office style entrance. The foyer could be used as a museum, a station or an airport lounge.

The building is a 60s/70s style and exhibits characteristics of Brutalist architecture, which was popular during the 1960s and 1970s.

This style is often characterised by its use of exposed concrete and tiles externally. Internally, walls are painted with tiled floors.

Some parts of the building on the upper floors are in disrepair so could be ideal if you are looking for this kind of set up.







# London Road Campus

Our London Road campus is one of the University's original campuses and is a short walk from both Whiteknights campus and the town centre. It's a peaceful setting of traditional cloisters and green spaces.

The site was given to the university in 1904 by the Palmer family, owners of Reading's Huntley & Palmers biscuit makers. It served as the university's main site until after the much larger Whiteknights Campus was acquired in 1947.

The university's Great Hall, which plays host to the university graduation ceremonies, is to be found at London Road. The University's war memorial, which takes the form of a clock tower, is situated near the Great Hall.

**Watch a Campus Tour**







# The Different Architecture on our campus

As a University Campus, over the years, the campus has added to, altered existing buildings and kept the traditional buildings rich in heritage.

After the Second World War universities became the country's most ambitious architectural patrons with buildings regarded as the best works of the period's most eminent architects.

This gives you plenty of scope for various film projects giving lots of choice.







# Greenlands Campus

Henley Business School began life at Greenlands the end of the second World War.

The campus is set within the 30-acre Henley Business School estate in the beautiful Oxfordshire countryside, alongside the River Thames. The magnificent Grade II Listed Building is owned by the University of Reading and steeped in history, offering a range of flexible capacities and facilities along with a 100-bed hotel.

[Virtual Tour link](#)







# Catering

Hospitality available throughout the campus.

Whether you are looking for catering for you and your crew or you need a food and drink location set up, we have various outlets and cafe's for you and your crew to refuel in between shoots. We can deliver anything from a sandwich lunch to the film location, to offering vouchers to be used in the restaurants, café or pub. Depending which day you are on campus, you could even visit the street food vendors at our International Foodie Thursday.

[Find out more](#)







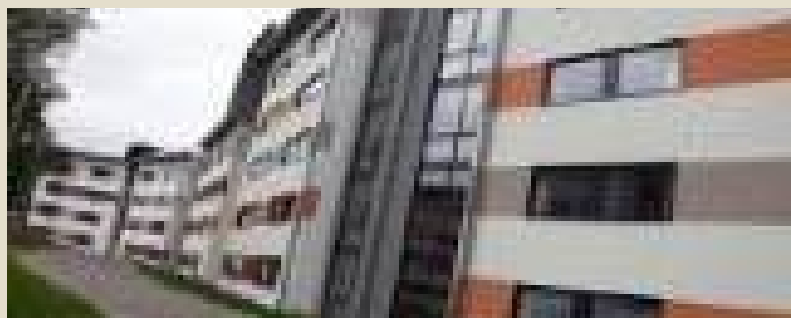
# Other campus Facilities

## Parking & Porter Services

Complimentary parking is available depending on the size of your crew. We are able to accommodate a number of vehicles depending on the filming location on campus and the weight of vehicles. If lots of parking is required, a fee may be required. We can also put out signage on campus and Porters are also available to assist crew with unloading/packing up if required. This is a chargeable service.







# Stay with us

## Crew accommodation during the summer (July through to September)

During the summer we are also able to offer Premium Ensuite Accommodation in Halls. Outside of the summer vacation, we have a number of partnerships with local hotels where we can offer recommendations and discounted hotels when you are visiting the University of Reading.



[Find out more](#)



# Venue Reading

HOSPITALITY

at  
University of  
Reading

Find us on:



R · E · D · A<sup>TM</sup>

Reading's Economy & Destination Agency



Conferences uk



LOCATION HQ



chooseyourvenue.com

venue  
DIRECTORY.com



Christmas Parties  
Unlimited



FILM  
LOCATIONS

SEARCH | BOOK | SHOOT

venues of  
excellence



event  
industry  
news



GREAT  
WEST WAY

BERKS,  
BUCKS & OXON  
WEDDING MAGAZINE

cwm  
COUNTY WEDDING MAGAZINES



info@venuereading.com | 0118 378 5657 | venuereading.com